

Symphony nr. 18 in F major K. 130

Wolfgang Amadeus Mozart (1756-1791)

Allegro.

Flauto I

The musical score for Flauto I in F major, K. 130, measures 1-125. The piece is in 3/4 time and begins with a treble clef and a key signature of one flat (F major). The score is divided into systems of five staves each. Measure numbers 10, 18, 29, 47, 62, 75, 83, 92, 110, and 125 are indicated at the start of their respective systems. The score includes various musical notations such as eighth and sixteenth notes, rests, and dynamic markings. The dynamics *f* (forte) and *p* (piano) are used throughout. Fingerings are indicated by numbers 1-5 above notes. A trill is marked with a trill symbol and a wavy line in measure 75. The score concludes with a double bar line at measure 125.

5 *f*

10 *p*

18 *f*

29 *p* *f*

47 *p* *f*

62 *f*

75 *f*

83 *f*

92 *p*

110 *f* *f*

125

Flauto I

10
f

19

4
tr.

33

p

44

p *f*

56

10
f 3

75

4
tr.

88

tr. 13
p

111

f

MENUETTO.

Flauto I

4

12

Trio.
6
f

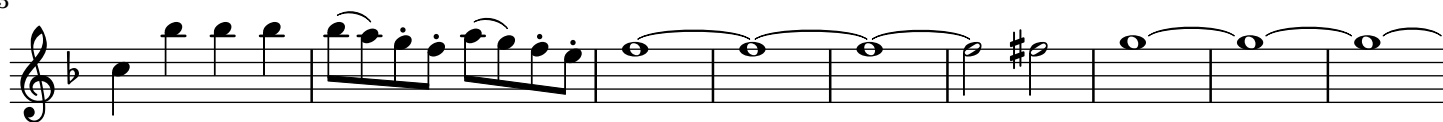
27

f 4
f

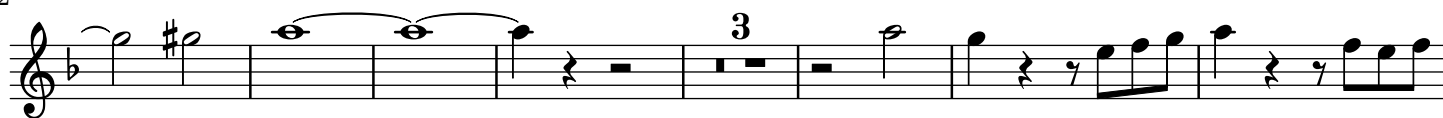
Flauto I

This musical score for Flute I spans measures 7 through 108. The key signature has one flat (B-flat), and the time signature is common time (C). The piece begins at measure 7 with a forte (*f*) dynamic. It features a variety of rhythmic patterns, including eighth-note runs, sixteenth-note passages, and sustained notes. Dynamic markings include *f*, *p*, *pp*, and *f*. Measure numbers are placed at the start of each system: 7, 16, 28, 37, 52, 57, 63, 71, 84, 93, 99, and 108. The notation includes slurs, ties, and repeat signs.

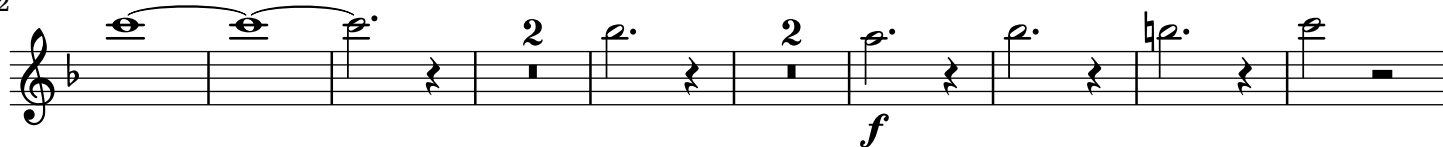
113



122



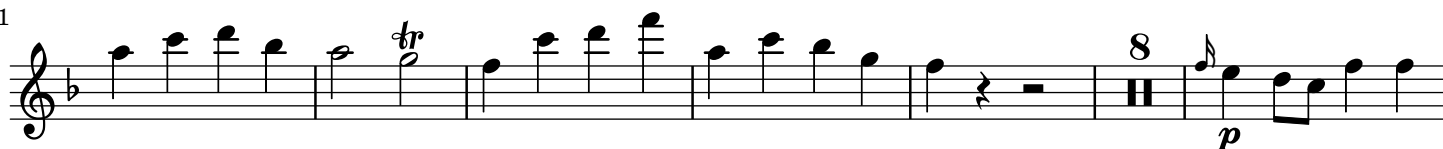
132



144



151



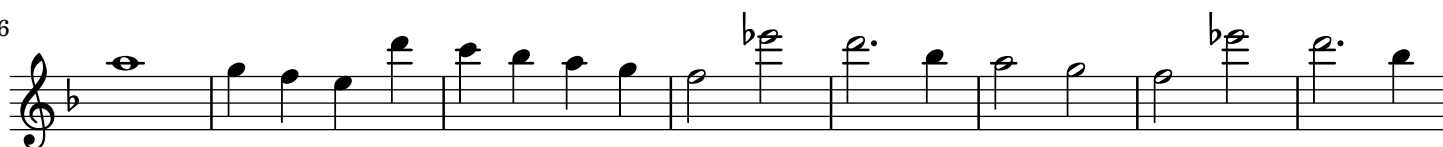
165



170



176



184

